

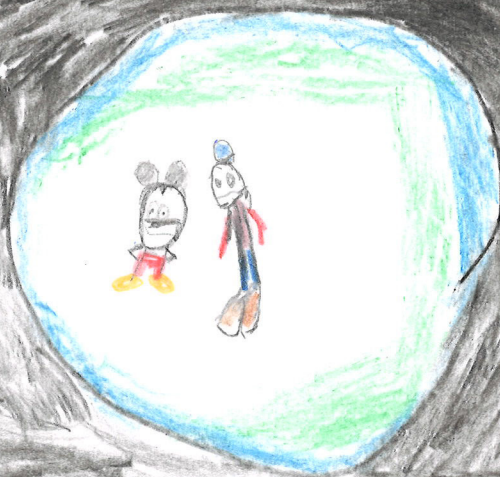
SUPER ANTON



Text och illustrationer: Anton Ohlsson
Produktion: Mediabyrån daglig verksamhet

Långt borta på en
annan planet...





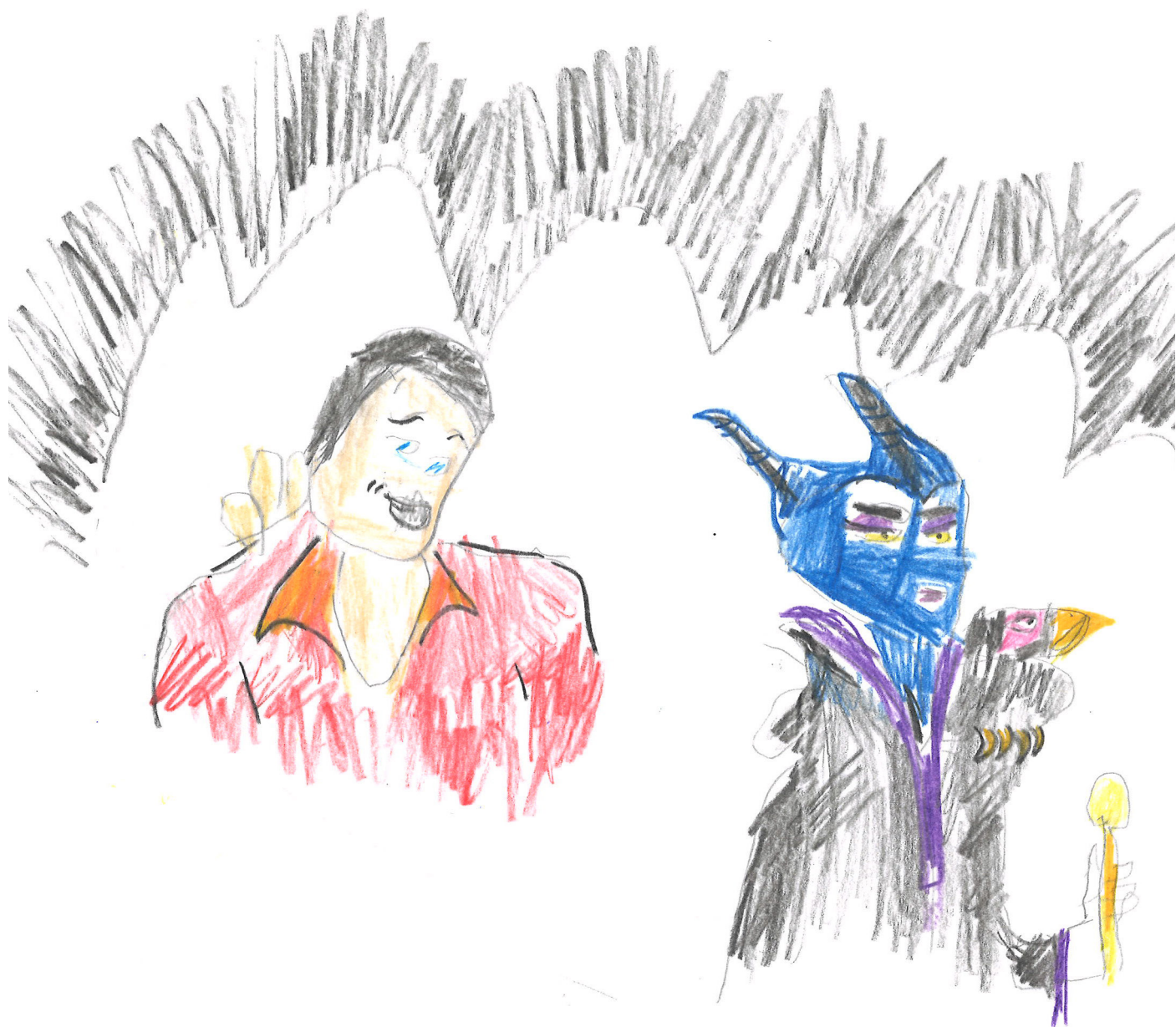
...bodde det bara
disneyfigurer.



Eller nästan...
Där fanns också en
mänsklig bebis...

Men!

En dag dyker de onda upp...



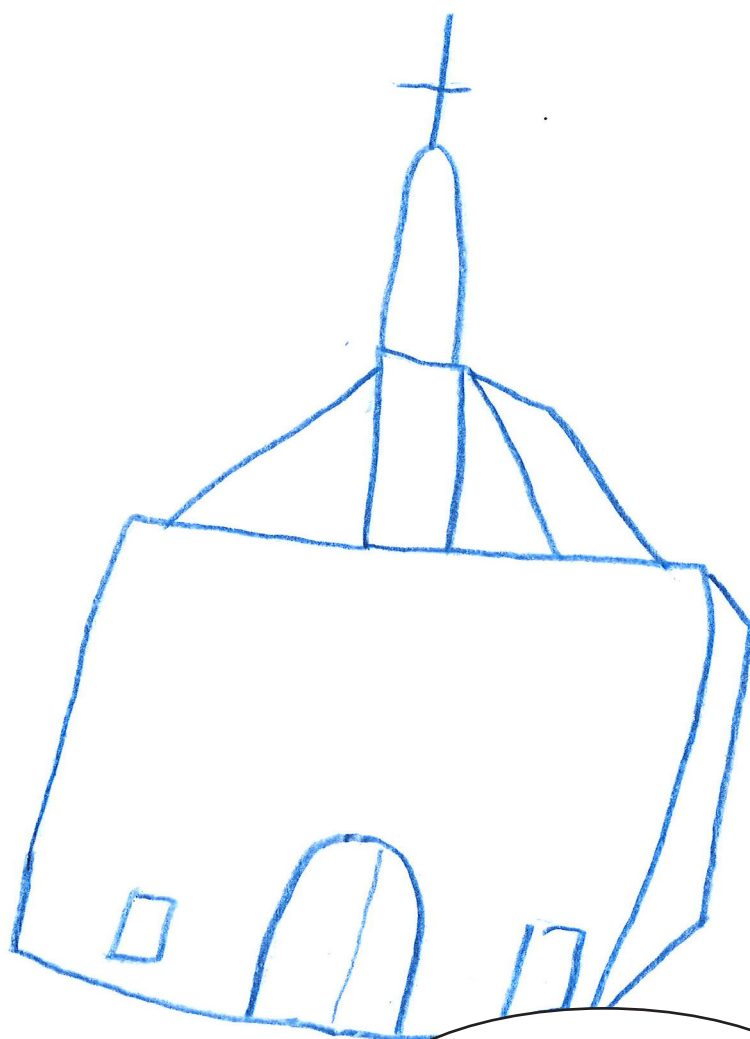
Hejdå!
Vi ses igen



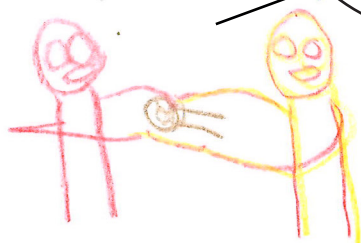
Då kommer Musse och
räddar bebisen

Lite senare på jorden med
hjälp av disneymagi så
hamnar bebisen i en mammas
mage.





Vi döper dig
till Anton!

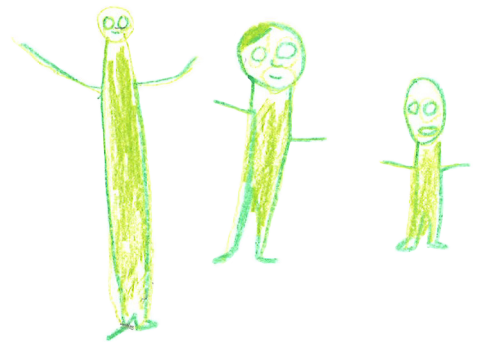




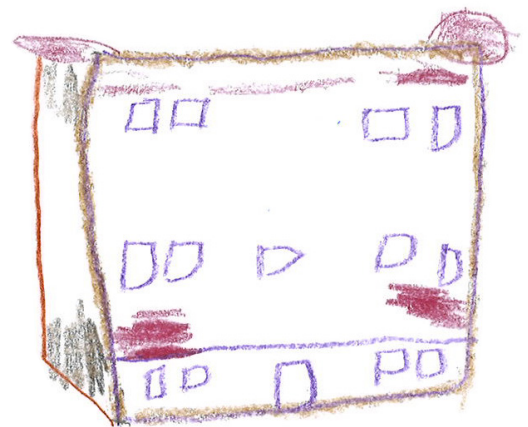
En dag på dagis visar det sig
att Anton är stark.



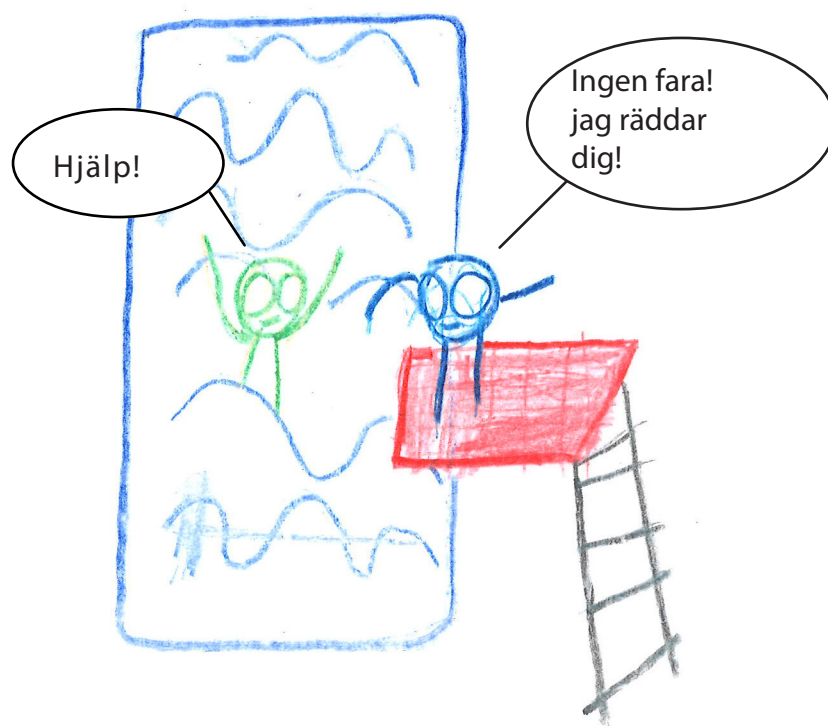
Anton får nya syskon



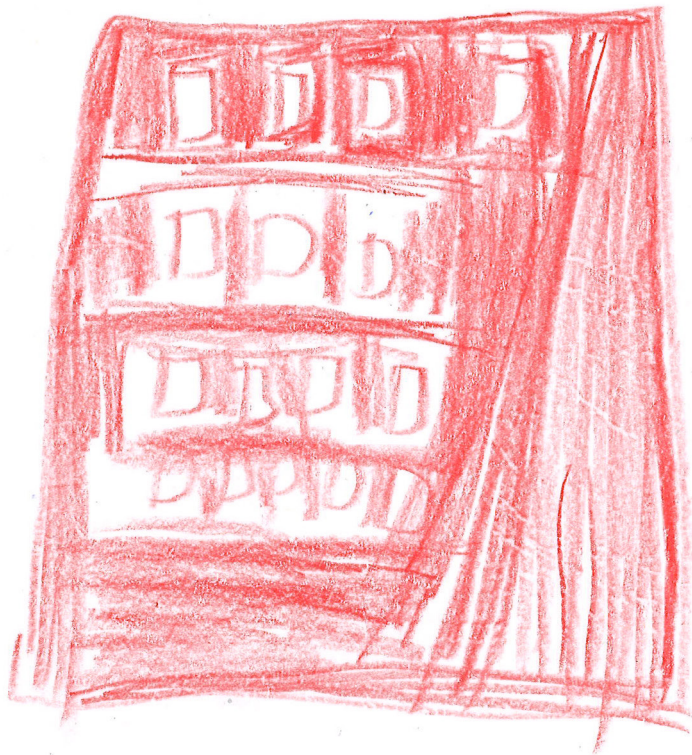
Anton får nya
vänner på nya
skolan.



Det händer
mycket i
Antons liv.



På ett läger en sommar visar det sig att Anton har magiska krafter.



Nu har Anton börjat på
Landalaskolan.
Utanför skolan springer
Anton fram och räddar en elev som håller
på att bli påkörd.

Anton får medalj





Anton blir SuperAnton.
Anton flyger iväg till mars.

Hur skall det gå?

följ Antons vidare äventyr!

the 1990s, the number of people in the UK who are aged 65 and over has increased from 10.5 million to 13.5 million (19.5% of the population).

There are a number of reasons why the number of people aged 65 and over has increased. One of the main reasons is that people are living longer. The life expectancy at birth in the UK is now 78 years for men and 82 years for women. This is an increase of 10 years since 1950. The increase in life expectancy is due to a number of factors, including improvements in diet, hygiene, and medical care.

Another reason why the number of people aged 65 and over has increased is that people are having children later in life. This means that there are more people who are aged 65 and over who were born in the 1950s and 1960s. These people are now in their 60s and 70s, and are therefore contributing to the increase in the number of people aged 65 and over.

The increase in the number of people aged 65 and over has a number of implications for society. One of the main implications is that there is a need for more social care services. As people age, they are more likely to have health problems and to need help with everyday tasks. This means that there is a need for more care homes, day care centres, and home care services.

Another implication of the increase in the number of people aged 65 and over is that there is a need for more financial support. Many people aged 65 and over have a low income, and this means that they are often in need of financial help. This is why the government has introduced a range of benefits for people aged 65 and over, including the State Pension and the Winter Fuel Payment.

The increase in the number of people aged 65 and over is a challenge for society, but it is also an opportunity. As people age, they bring with them a wealth of experience and skills. This means that there is a need for more opportunities for older people to contribute to society. This could be done through a range of activities, including volunteering, part-time work, and education.

In conclusion, the number of people aged 65 and over in the UK has increased significantly in the 1990s. This is due to a number of factors, including improvements in life expectancy and people having children later in life. The increase in the number of people aged 65 and over has a number of implications for society, including a need for more social care services and financial support. It is also an opportunity for older people to contribute to society.

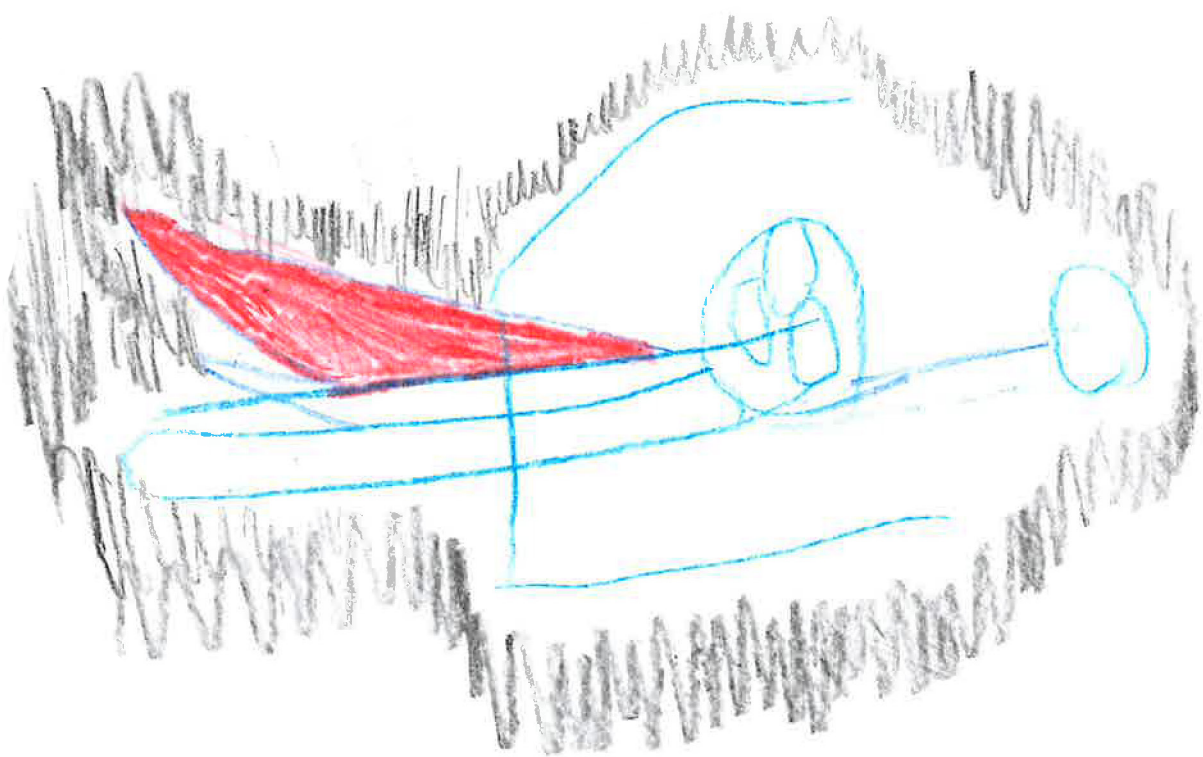
The following table shows the number of people aged 65 and over in the UK from 1950 to 2000. The number of people aged 65 and over has increased from 10.5 million in 1950 to 13.5 million in 2000. This is an increase of 28.6%.

The following table shows the percentage of the population aged 65 and over in the UK from 1950 to 2000. The percentage of the population aged 65 and over has increased from 19.5% in 1950 to 21.5% in 2000. This is an increase of 10.3%.

The following table shows the number of people aged 65 and over in the UK who are in need of social care services from 1950 to 2000. The number of people aged 65 and over in need of social care services has increased from 1.5 million in 1950 to 2.5 million in 2000. This is an increase of 66.7%.

The following table shows the number of people aged 65 and over in the UK who are in need of financial support from 1950 to 2000. The number of people aged 65 and over in need of financial support has increased from 2.5 million in 1950 to 3.5 million in 2000. This is an increase of 40%.

The following table shows the number of people aged 65 and over in the UK who are contributing to society from 1950 to 2000. The number of people aged 65 and over contributing to society has increased from 1.5 million in 1950 to 2.5 million in 2000. This is an increase of 66.7%.



mediabyrån daglig verksamhet 2023